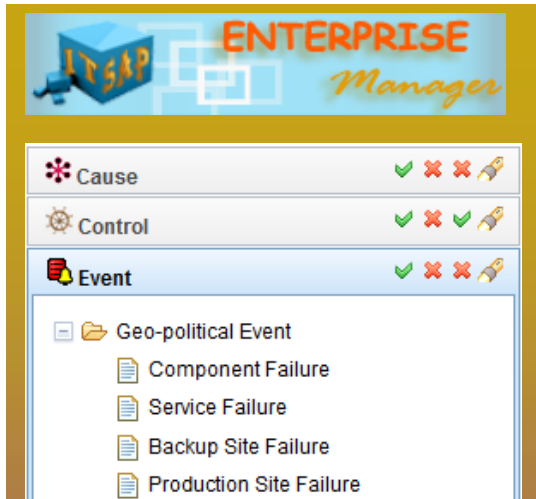


eGRACS<sup>®</sup> Enterprise Manager provides a central repository for risk and control information in the context of organization-wide governance, risk management, audit, compliance and information security activities.



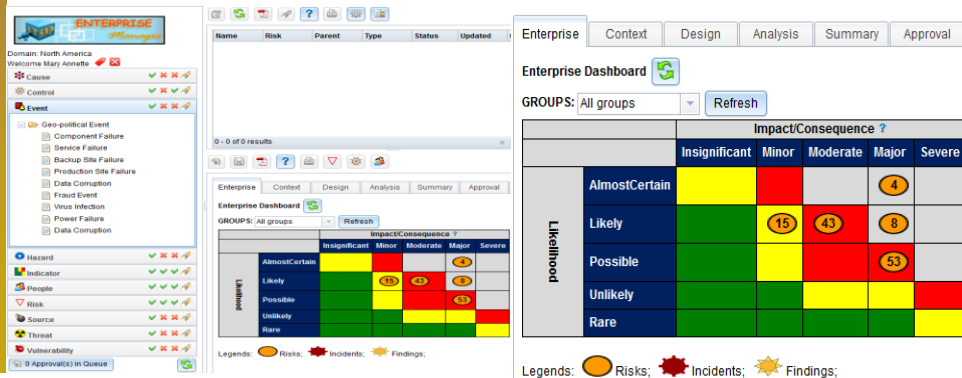
## KEY BENEFITS

- Risk and control data from all assurance sources are aggregated together and located in one place.
- Gain aggregated view of organizational divisions, end to end functions and supporting technologies.
- Apply risk management process within the specific contexts of what is owned, its value, and inter-dependencies.
- Assign accountability at all levels of your enterprise hierarchy.
- Report quickly and easily with an automated rollup of risk and compliance information across your organization.

eGRACS Enterprise Manager enables you to gain an aggregate view of your business components, organizational functions and supporting technologies across your enterprise at any time.

## KEY FEATURES

- Ability to capture, assess and track risk and control information for your products, services, and business processes.
- Ability to associate enterprise processes, services, systems and information that support them, and relate technologies to the facilities where they reside.
- Ability to produce reports to monitor enterprise risk management activities at corporate and business-unit levels for informed decision making.
- Focus your attention on high risks by aggregating organization-wide process and risk information.



eGRACS :: Break GRC silos... Embrace Enterprise Risk Management  
 eGRACS :: Break GRC silos... Embrace Enterprise Risk Management